

Oric Microdisc Detail - www.48katmos.freeuk.com

Components ATMOS/ORIC floppy drive controller

R1 MAP 470	IC1 74LS156
R2 RESET 2200	IC2 74LS244
R3 RESET 2200	IC3 74LS245
R4 IRQ 2200	IC4 74LS38
R5 IO CONTR 2200	IC5 74LS244
R6 1793-33 4700	IC6 74LS273
R7 1793-32 4700	IC7 74LS38
R8 7438-8 10000	IC8 EPROM 2764
R9 7438-9 10000	IC9 1793 (SAB/WD)
R10 1793-39 10000	IC10 74LS138
R11 XTAL 1000	IC11 74LS32
R12 74123-7 270K	IC12 9216
R13 XTAL 1000	IC13 74LS393
R14 74123-15 27000	IC14 74LS09
R15 74221-15 2500	IC15 74LS11
R16 74221-7 3900	IC16 74LS10
R17 7400-12 4700	IC17 74LS04
R18 7400-1 4700	IC18 74LS02
R19 74244-1 10000	IC19 74LS00
R20 PHI 2 1000	IC20 74LS221
R21 1793-32 150	IC21 74LS123
R22 1793-34 150	
R23 1793-35 150	
R24 1793-36 150	

RV1 MAP 5000 trim

XTAL 8 Mhz

C1 47 uF* +5V	(*Electrolytic Radial
C2 10 uF* +12V	
C3 4.7 uF* RESET	
C4 2.2 uF +5V	(Tantallic)
C6 10 nF 74244 pin 1-19	(Ceramic)
C10 10 nF 7404 pin 11-12	
C11 100 pF 74221 pin 6-7	
C13 10 uF 74123 pin 6-7	
C14 2.2 uF 74123 pin 14-15	
C15 120 pF 74221 pin 14-15	

Decoupling capacitors 18 of 47 nF

J 1 Cable connector male 34 pins Computer

J 2 Cable connector male 34 pins Drive

IC Socket 20 pins 4 (244-244-245-273)

IC Socket 28 pins (ROM 2764)

IC Socket 8 pins (9216)

IC Socket 40 pins (1793)

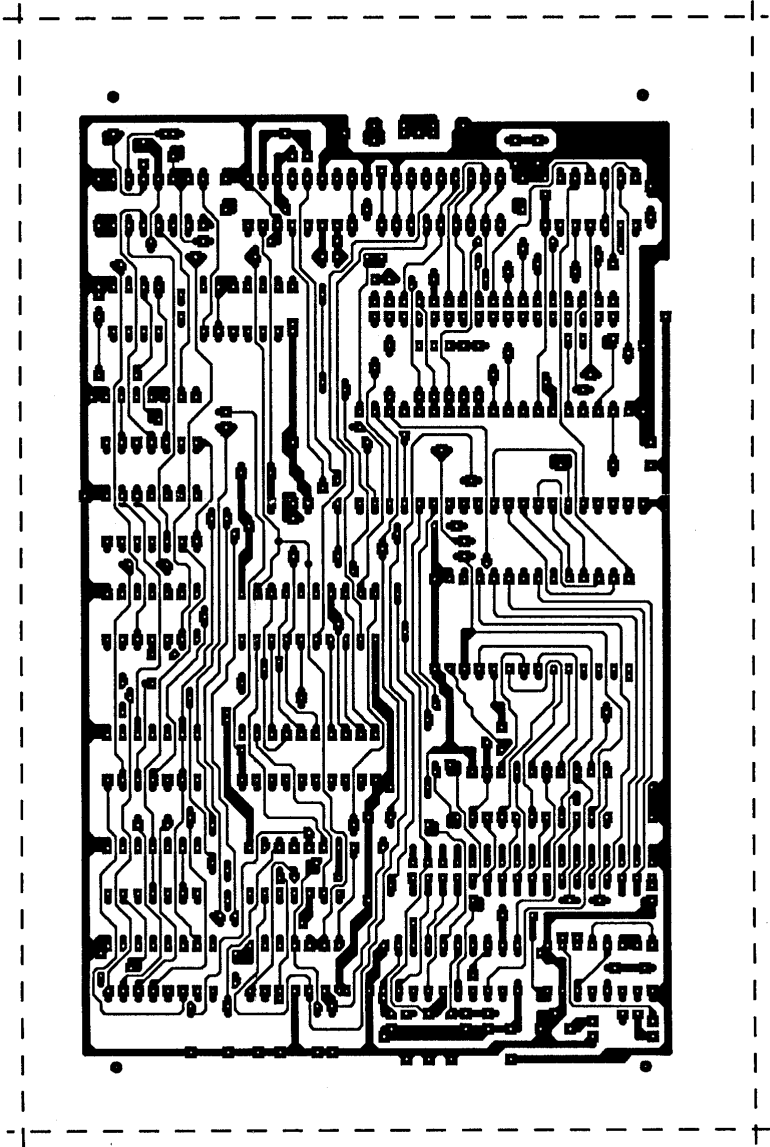
1C Socket 14 pins (7409)

1C Socket 16 pins (74221) optional

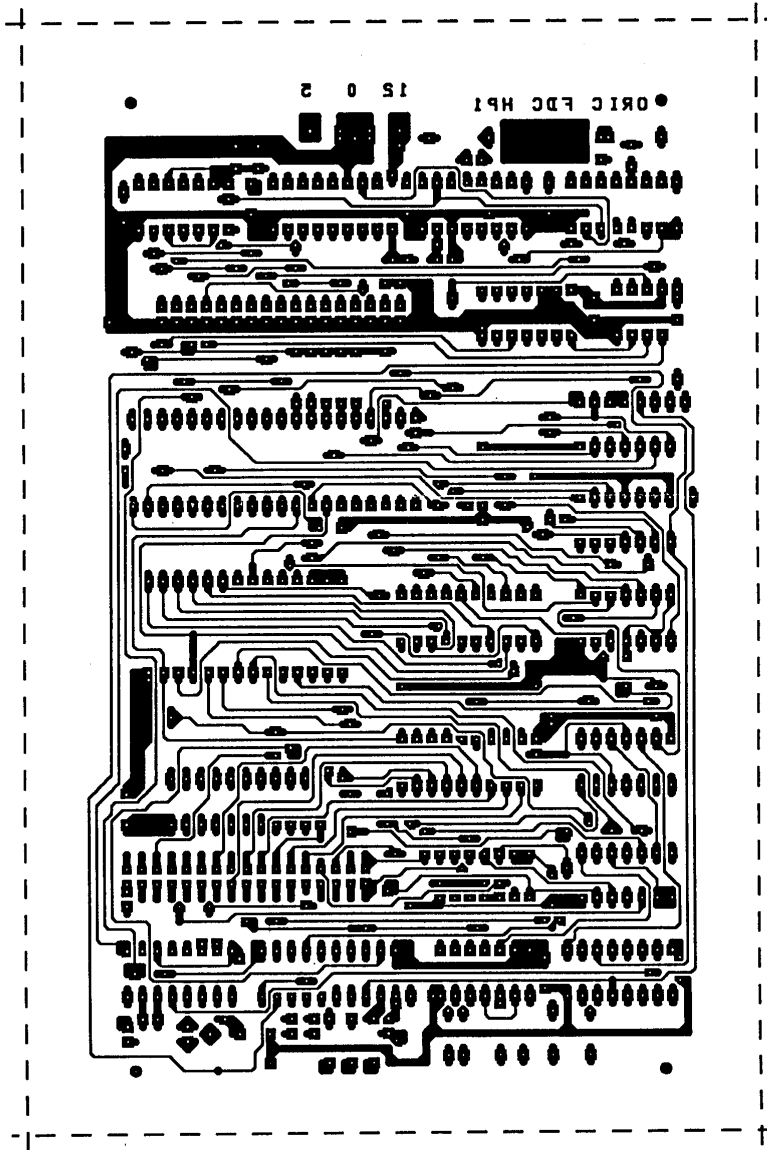
To Oric ribbon cable with 34 pins cable connectors at each end.

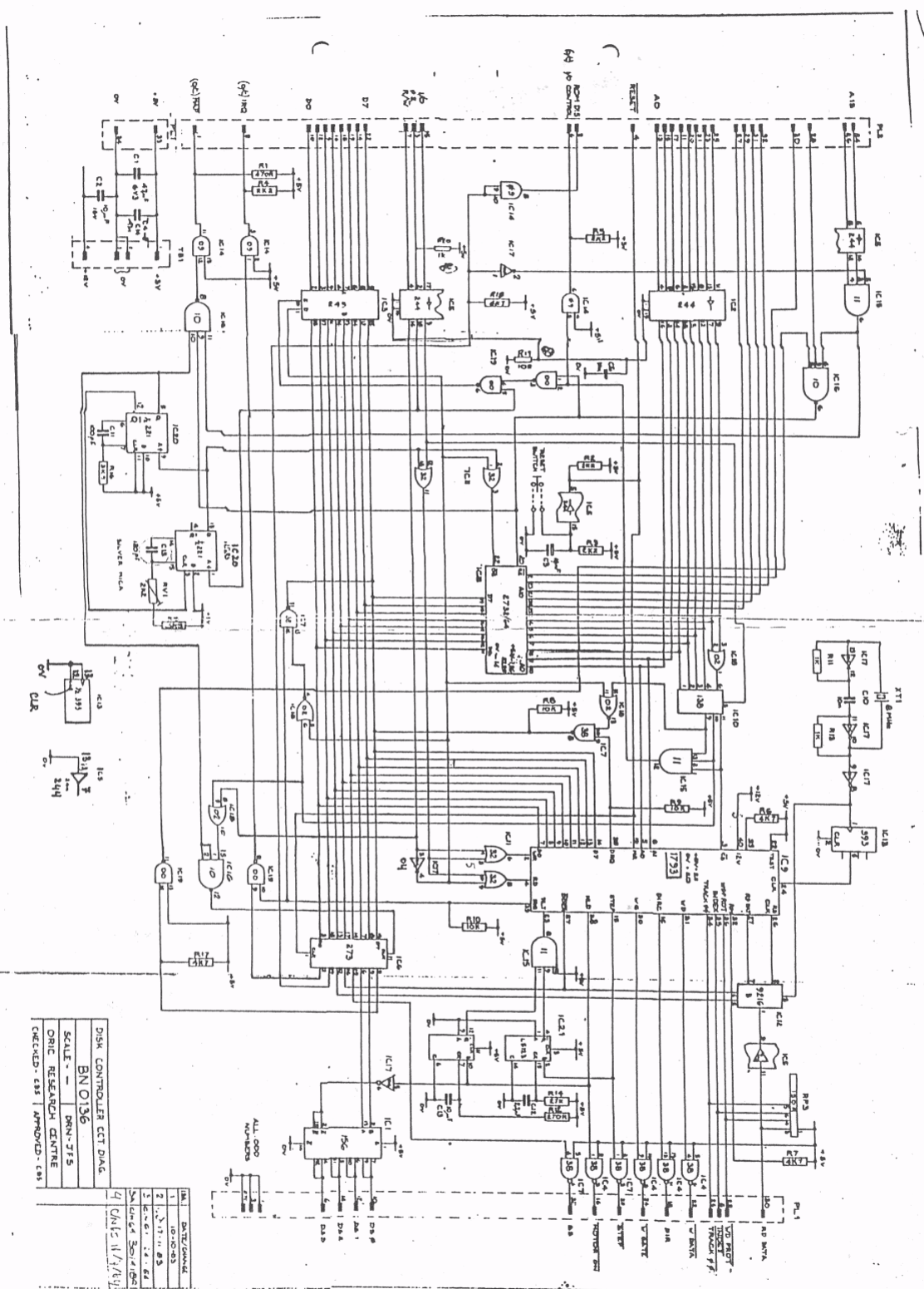
(Original size between lines 188mm x 125mm)

Solder side



Component side





DISK CONTROLLER CBT DIAG.
 BN 0136
 SCALE - - - - - PPN-275
 ORIC RESEARCH CENTRE
 CHECKED - CBS APPROVED - CBS

NO.	DATE/NO.
1	1.11.73
2	1.11.73
3	1.11.73
4	1.11.73
5	1.11.73
6	1.11.73
7	1.11.73
8	1.11.73
9	1.11.73
10	1.11.73

ALL GOOD NUMBERS

15